



# DOVER

- Aerial Map -  
Georgetown, SC  
957± Acres

*This map is for visual aid only and the accuracy is not guaranteed.*



Duck Impoundment

Duck Impoundments

Stocked Brackish Water Pond

Main House

Dock

Barns

Duck Impoundments

Gated Entrance

Staff House

Stocked Freshwater Pond

South Island Rd.

WINYAH BAY



# DOVER

- Headquarters Map -  
Georgetown, SC  
957± Acres

*This map is for visual aid only and the accuracy is not guaranteed.*



Stocked Brackish Water Pond

Skeet Range

Theatre

Owner's Office/Gym

Garden

Garage

Picnic House

The Lodge

Main House

Game Room

Sauna

Guest House

The Cottage

Barn

Equip. Barn

Storage Building

Fire Pit

Duck Impoundments

WINYAH BAY

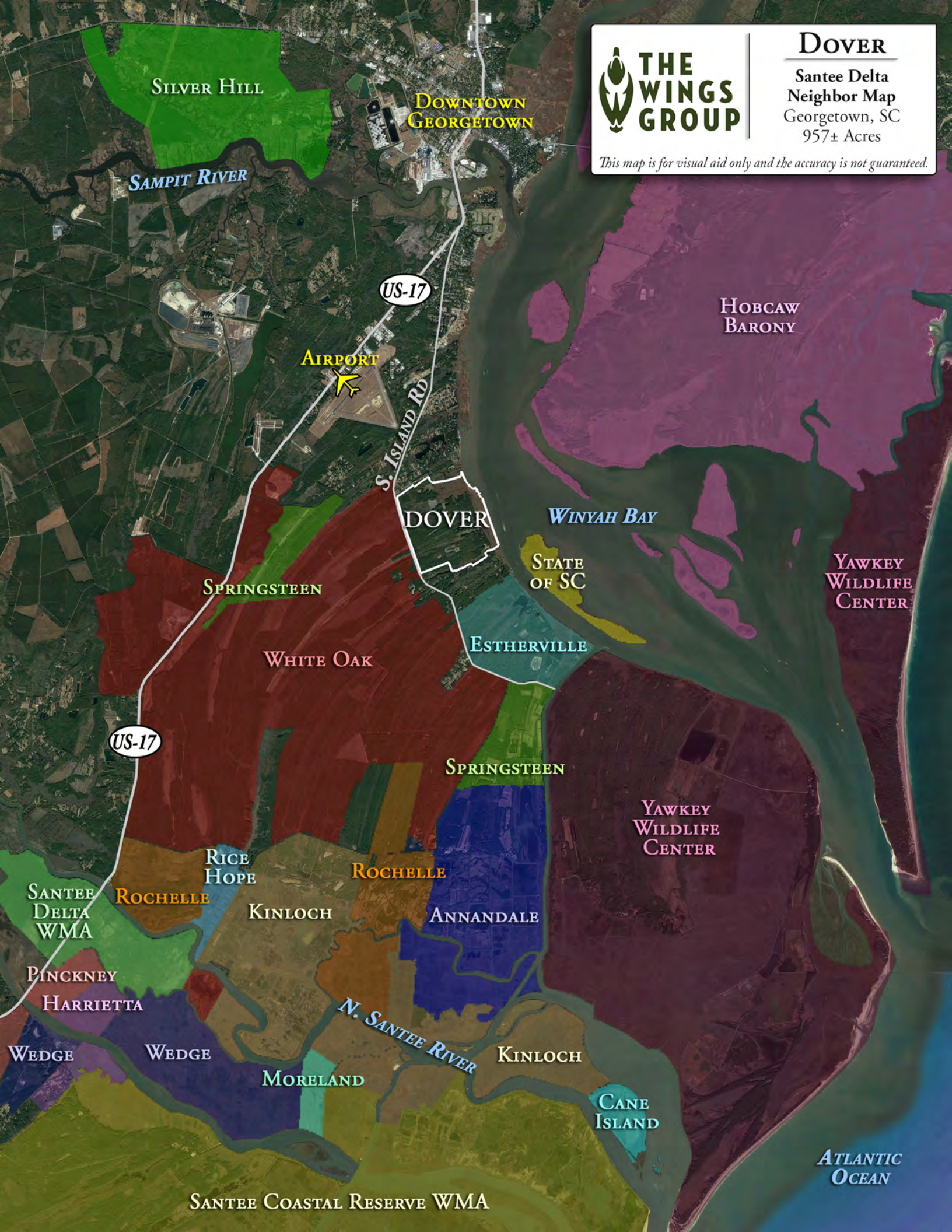
Dock



# DOVER

Santee Delta  
Neighbor Map  
Georgetown, SC  
957± Acres

*This map is for visual aid only and the accuracy is not guaranteed.*



SILVER HILL

DOWNTOWN  
GEORGETOWN

SAMPIT RIVER

US-17

AIRPORT

S. ISLAND RD

HOBCAW  
BARONY

DOVER

WINYAH BAY

STATE  
OF SC

YAWKEY  
WILDLIFE  
CENTER

SPRINGSTEEN

ESTHERVILLE

WHITE OAK

SPRINGSTEEN

YAWKEY  
WILDLIFE  
CENTER

US-17

RICE  
HOPE

ROCHELLE

SANTEE  
DELTA  
WMA

ROCHELLE

KINLOCH

ANNANDALE

PINCKNEY  
HARRIETTA

N. SANTEE RIVER

YAWKEY  
WILDLIFE  
CENTER

WEDGE

WEDGE

KINLOCH

MORELAND

CANE  
ISLAND

ATLANTIC  
OCEAN

SANTEE COASTAL RESERVE WMA



## DOVER

- State & Federal  
Protected Lands -  
Georgetown, SC  
957± Acres

*This map is for visual aid only and the accuracy is not guaranteed.*

### South Carolina

*Cape Romain-Santee Delta Region*

Georgetown★

Charleston★

Atlantic  
Ocean

Francis Marion  
National Forest  
259,000± Acres

Cape Romain NWR

Capers Island Heritage Preserve

Deweese Island & Big Hill Island

Santee Delta  
WMA

Santee Coastal  
Reserve WMA

DOVER

Hobcaw  
Barony

Yawkey  
Wildlife  
Center

*One of the longest stretches of  
undeveloped coastline on the Atlantic*



WACCAMAW NATIONAL  
WILDLIFE REFUGE

PAWLEYS  
ISLAND

GEORGETOWN

GEORGETOWN AIRPORT

DOVER

FRANCIS  
MARION  
NATIONAL  
FOREST

MCCLELLANVILLE

MOUNT PLEASANT

CHARLESTON

FOLLY  
BEACH

### DRIVING TIMES

GEORGETOWN - 12 MINUTES

MCCLELLANVILLE - 20 MINUTES

PAWLEYS ISLAND - 25 MINUTES

MOUNT PLEASANT - 40 MINUTES

CHARLESTON - 1 HOUR



**THE  
WINGS  
GROUP**

### DOVER

- General Location -  
Georgetown, SC  
957± Acres

*This map is for visual aid only and the accuracy is not guaranteed.*