



State Route 200

Jericho Road

ICHAUWAY



**LONGLEAF**  
- AERIAL MAP -  
Albany, Georgia  
1,282± Acres

*This map is for visual aid only and the accuracy is not guaranteed.*



**LONGLEAF**  
- HEADQUARTERS  
MAP -  
Albany, Georgia  
1,282± Acres

*This map is for visual aid only and the accuracy is not guaranteed.*



Manager's House

The Shed & Office

Pole Barn

Carriage Barn

Stable

Dog Kennel

The Barn Guest House  
Guest Kennels

Main House

Skeet Range

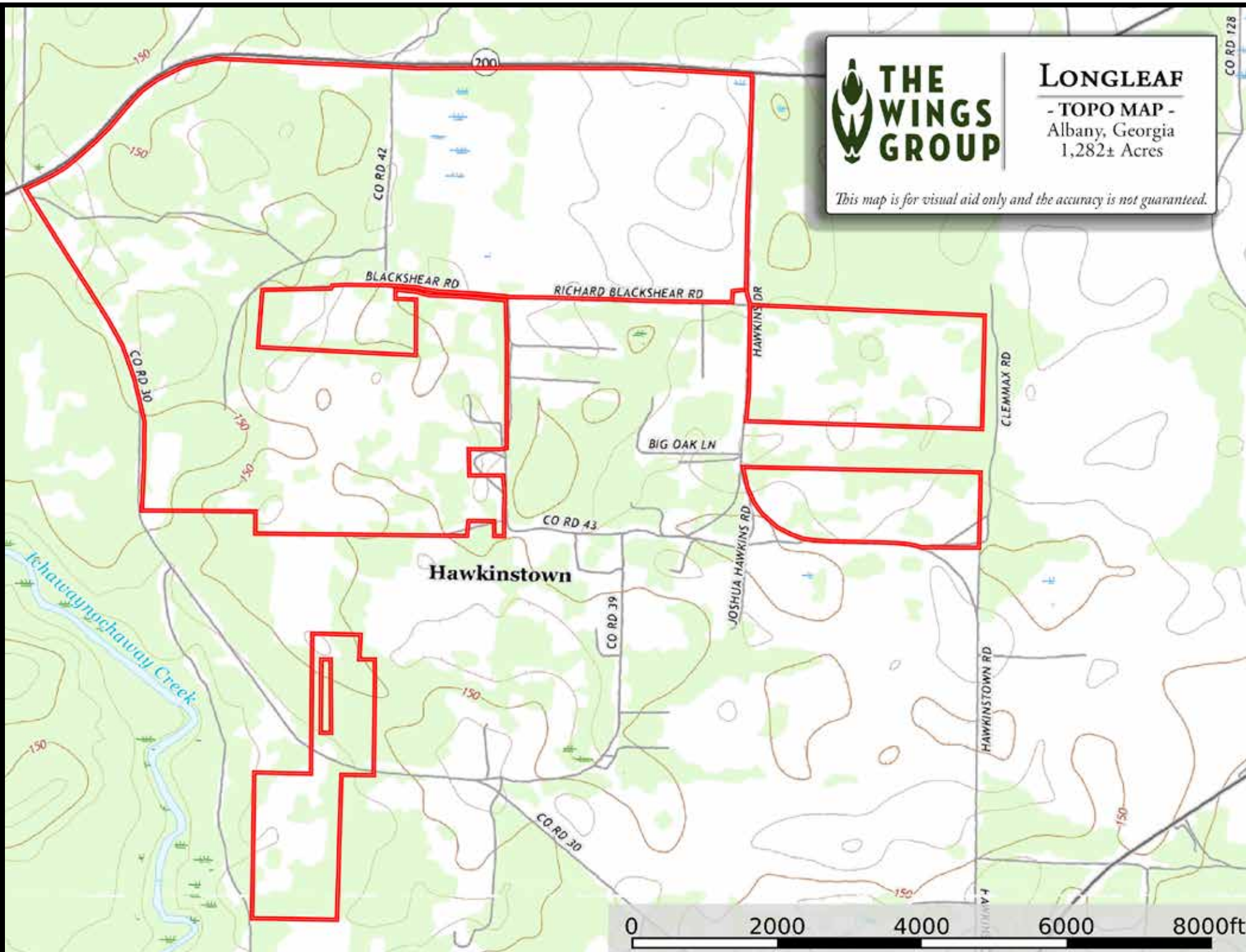




# LONGLEAF

- TOPO MAP -  
Albany, Georgia  
1,282± Acres

*This map is for visual aid only and the accuracy is not guaranteed.*



# LONGLEAF

- SOIL MAP -

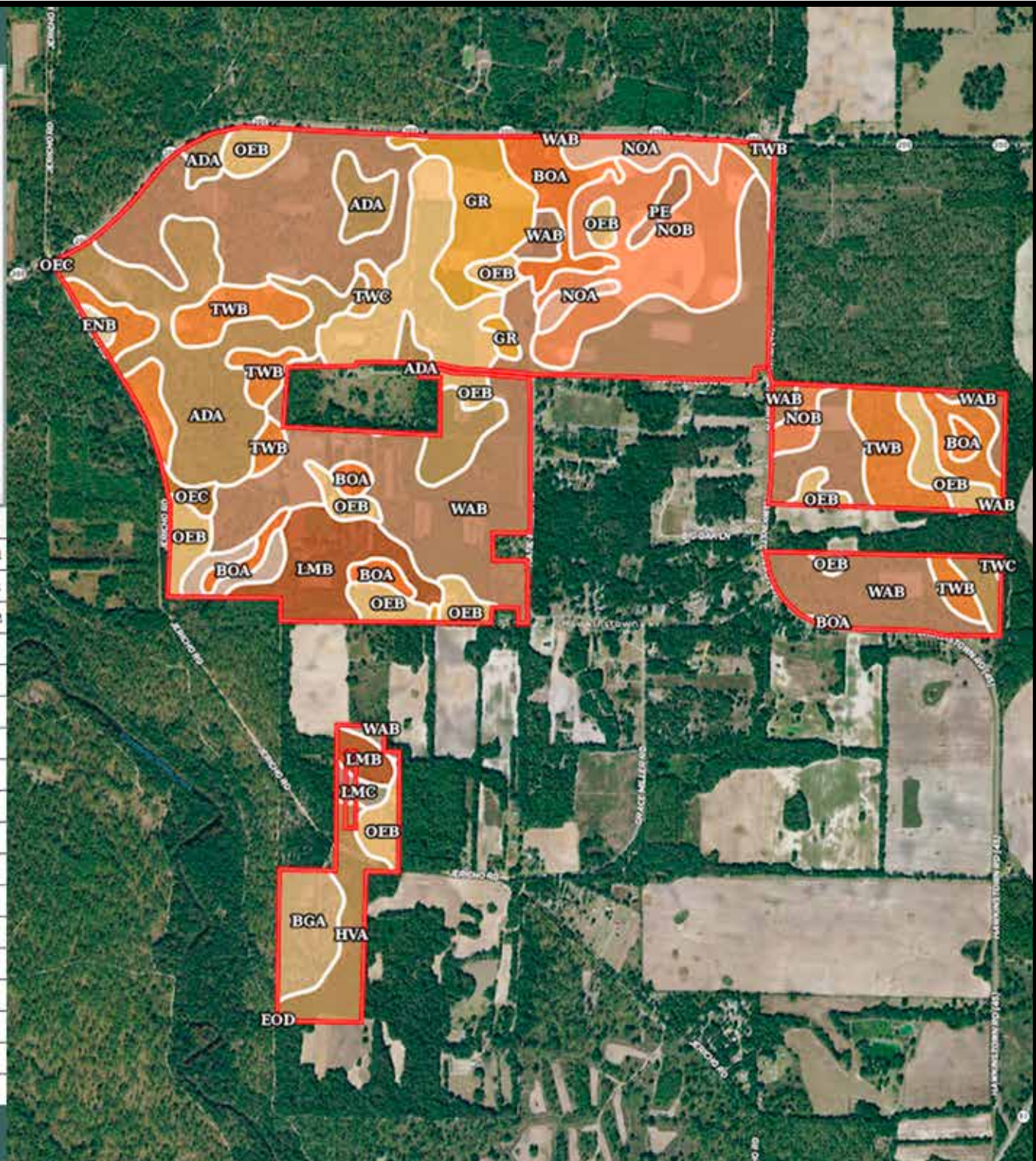
1,282± TOTAL ACRES  
ALBANY, GEORGIA

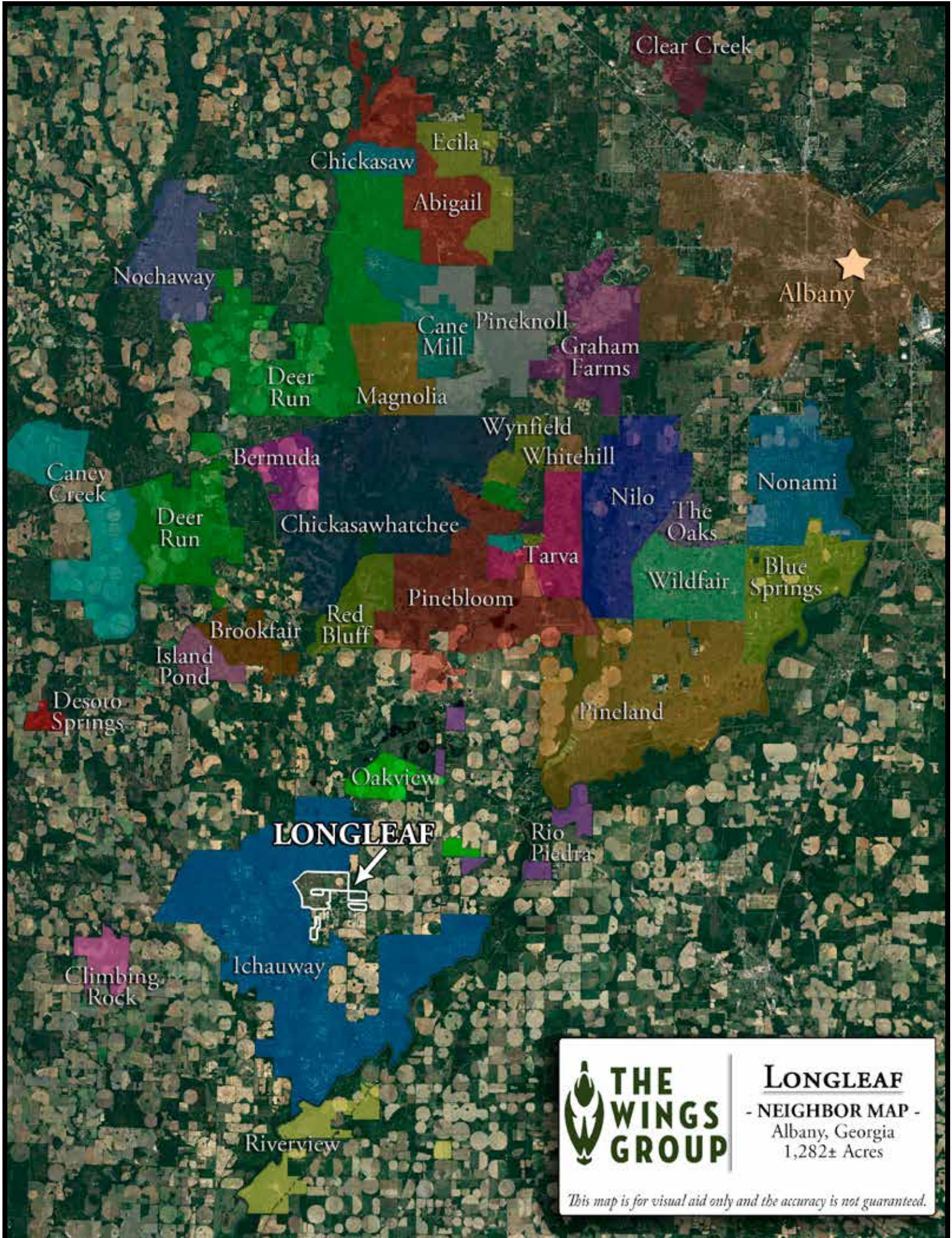
*This map is for visual aid only  
and the accuracy is not guaranteed.*



**The Wings Group**  
Elliott Davenport, Jr. : (423) 362-2092

SOIL CODE	SOIL DESCRIPTION	%
WaB	Wagram loamy sand, 0 to 5 percent slopes	34.01
AdA	Albany sand, 0 to 2 percent slopes	13.32
OeB	Orangeburg loamy sand, 2 to 5 percent slopes	12.82
TwB	Troup sand, 0 to 5 percent slopes	8.82
NoB	Norfolk loamy sand, 2 to 5 percent slopes	8.34
LmB	Lucy loamy sand, 0 to 5 percent slopes	4.52
Gr	Grady fine sandy loam	4.13
BoA	Bonneau loamy sand, 0 to 2 percent slopes	4.01
HvA	Hornsville fine sandy loam, 0 to 2 percent slopes	2.65
BgA	Bigbee sand, 0 to 2 percent slopes	2.33
NoA	Norfolk loamy sand, 0 to 2 percent slopes	1.89
WaC	Wagram loamy sand, 5 to 8 percent slopes	0.96
LmC	Lucy loamy sand, 5 to 8 percent slopes	0.63
Pe	Pelham loamy sand	0.51
OeC	Orangeburg loamy sand, 5 to 8 percent slopes	0.41
TwC	Troup sand, 5 to 8 percent slopes	0.41
EnB	Esto-Norfolk complex, 2 to 5 percent slopes	0.23
EoD	Esto-Orangeburg complex, 8 to 15 percent slopes	0.0






**THE WINGS GROUP**

**LONGLEAF**  
 - NEIGHBOR MAP -  
 Albany, Georgia  
 1,282± Acres

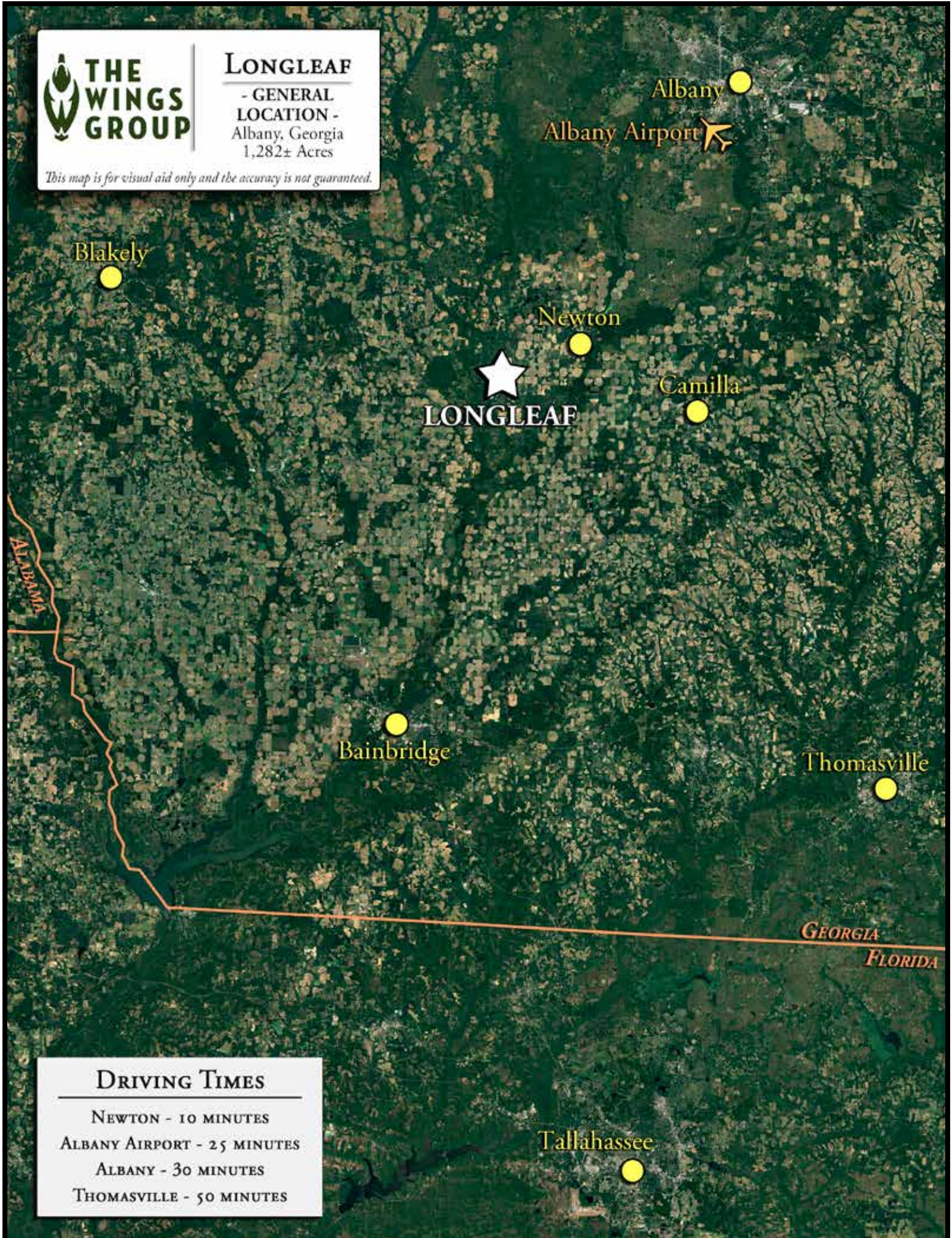
*This map is for visual aid only and the accuracy is not guaranteed.*



## LONGLEAF

- GENERAL  
LOCATION -  
Albany, Georgia  
1,282± Acres

*This map is for visual aid only and the accuracy is not guaranteed.*



### DRIVING TIMES

- NEWTON - 10 MINUTES
- ALBANY AIRPORT - 25 MINUTES
- ALBANY - 30 MINUTES
- THOMASVILLE - 50 MINUTES