



ANNANDALE

- Aerial Map -
Georgetown, SC
3,486± Acres

This map is for visual aid only and the accuracy is not guaranteed.





ANNANDALE

- Impoundments -
Georgetown, SC
3,486± Acres

This map is for visual aid only and the accuracy is not guaranteed.



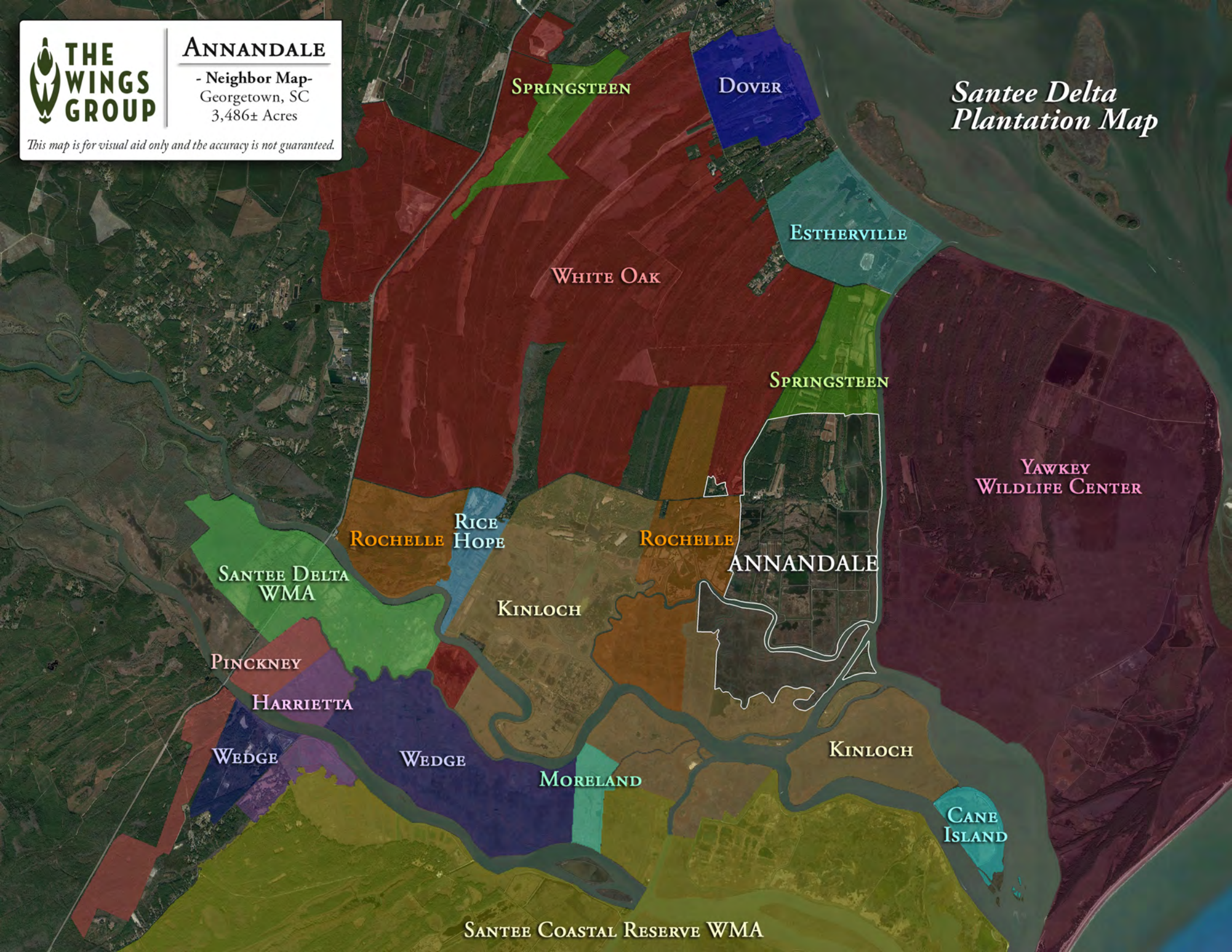


ANNANDALE

- Neighbor Map-
Georgetown, SC
3,486± Acres

This map is for visual aid only and the accuracy is not guaranteed.

Santee Delta Plantation Map



SPRINGSTEEN

DOVER

ESTHERVILLE

WHITE OAK

SPRINGSTEEN

YAWKEY
WILDLIFE CENTER

ROCHELLE

RICE
HOPE

ROCHELLE

ANNANDALE

SANTÉE DELTA
WMA

KINLOCH

PINCKNEY

HARRIETTA

WEDGE

WEDGE

MORELAND

KINLOCH

CANE
ISLAND

SANTÉE COASTAL RESERVE WMA



ANNANDALE

- State & Federal
Protected Lands -
Georgetown, SC
3,486± Acres

This map is for visual aid only and the accuracy is not guaranteed.

South Carolina

Cape Romain-Santee Delta Region

Georgetown★

Charleston★

Atlantic
Ocean

Francis Marion
National Forest
259,000± Acres

Cape Romain NWR

Capers Island Heritage Preserve

Dewees Island & Big Hill Island

*One of the longest stretches of
undeveloped coastline on the Atlantic*

Santee Delta
WMA

Santee Coastal
Reserve WMA

ANNANDALE

Yawkey
Wildlife
Center



WACCAMAW NATIONAL
WILDLIFE REFUGE

MYRTLE
BEACH

PAWLEYS
ISLAND

GEORGETOWN

GEORGETOWN
AIRPORT

ANNANDALE

FRANCIS
MARION
NATIONAL
FOREST

MCCLELLANVILLE

MOUNT PLEASANT

CHARLESTON

FOLLY
BEACH

DRIVING TIMES

- GEORGETOWN - 20 MINUTES
- MCCLELLANVILLE - 20 MINUTES
- PAWLEYS ISLAND - 40 MINUTES
- MOUNT PLEASANT - 40 MINUTES
- CHARLESTON - 1 HOUR



ANNANDALE

- General Location -
Georgetown, SC
3,486± Acres

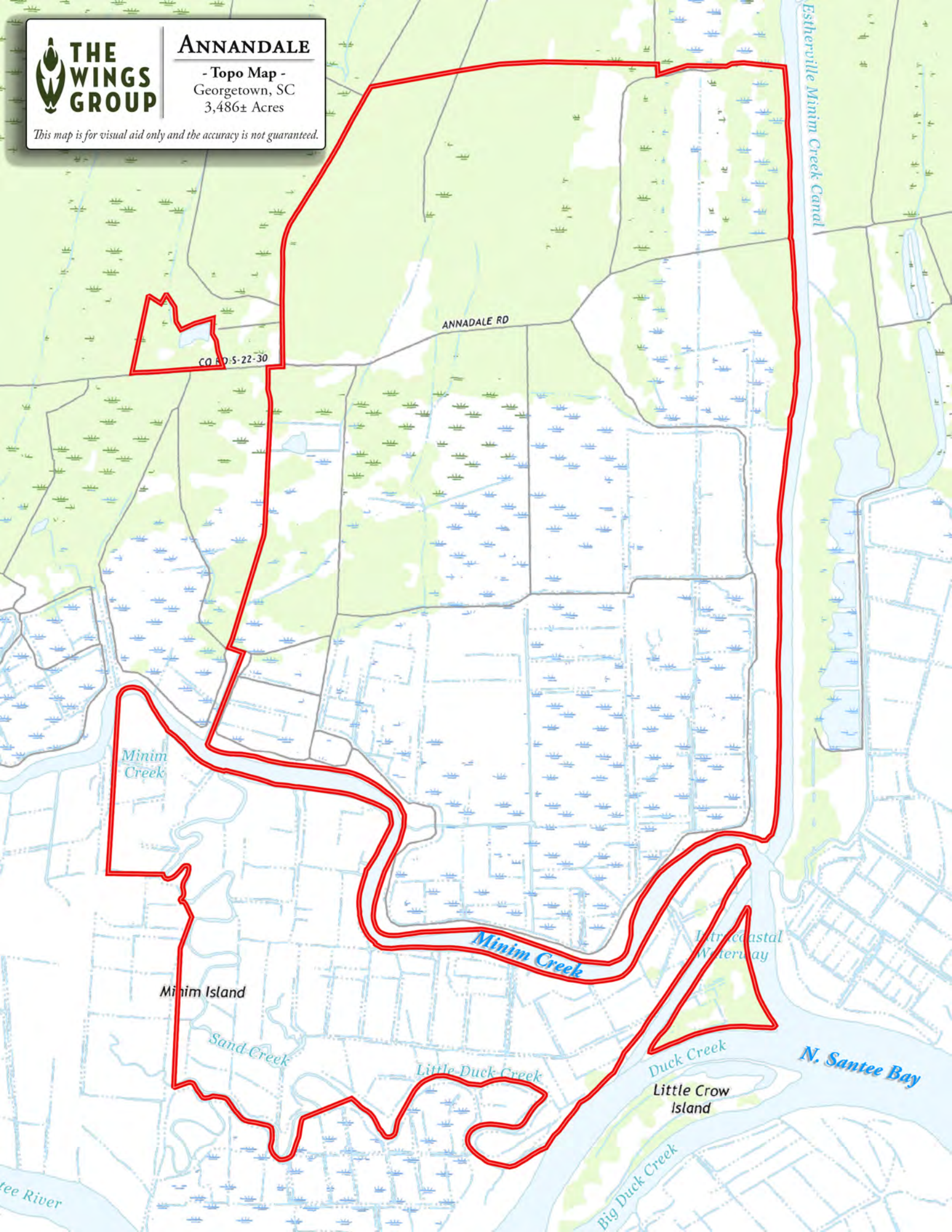
This map is for visual aid only and the accuracy is not guaranteed.



ANNANDALE

- Topo Map -
Georgetown, SC
3,486± Acres

This map is for visual aid only and the accuracy is not guaranteed.



ANNADALE RD

CO RD 5-22-30

Minim Creek

Minim Creek

Minim Island

Sand Creek

Little Duck Creek

Duck Creek

Little Crow Island

Big Duck Creek

Intracoastal Waterway

N. Santee Bay

Estherville Minim Creek Canal

Santee River